



HD60G-C AC Automation Silent Curtain Motor

Manual V1.0

Smart & Silent



Product Features

- Ultra Quiet**
Noise level as low as 27 dB (A)
- Auto Calibration**
Built in Hall sensor for precise limit control and calibration
- One Touch Operation**
Activate the operation to close or open by gently pulling the curtain
- Stop By Obstacle**
The motor will stop operation automatically when obstacles are detected to prevent further damage to the system
- R300 Curved Track**
Available in L shape, U shape, C shape track with minimum radius of 300mm
- Memory Saving**
Built in memory saving module to save the limit automatically during power failure. No resetting required when the power resumes (in case where the curtain position has changed after power failure, the motor will re-calibrate again for the limit)
- Curtain Stack Protection**
Recognize the stacking distance in order not to overstack the curtain
- Speed Adjustment**
3 speeds available, 90rpm, 110rpm, 130rpm
- Ripple Fold**
Available in ripple fold for fuller and consistent drapery folds
- Soft Start/Stop**
Auto detect for draperies to slow down and stop smoothly when it is close to the end limit
- Manual Operation**
In case of power failure, manual control is possible to open/close the drapery

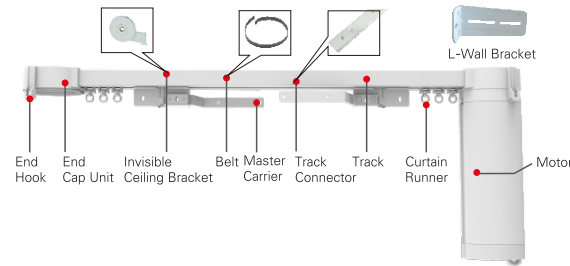
Product Highlights

- IN** Invisible installation brackets
- IN** Power cable is concealed at the side of motor, leaving a neat look after installation
- Tracks are coated by electrophoretic coating process, providing a even and smooth finishing surface to minimize friction and noise during operation
- Secure installation of the motor by plug-in and rotate method

Specification

	Rated Voltage	Rated Torque	Speed	Max Power	Protection Level	Insulation Class	Duty Rating
AC Version	AC100-240V	1.2N.m	30-130rpm	50W	IP41	E	S2-10min

System Accessories Overview



Motor Load Chart (for reference only)

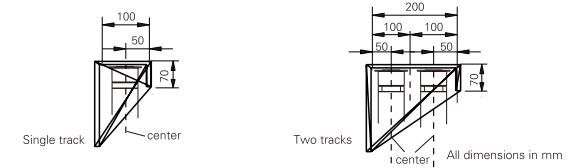
Track Type	Curtain Weight	Track Length				
		4m	6m	8m	10m	12m
Single Motor	Single Motor	60Kg	50Kg	45Kg	40Kg	35Kg
	Dual Motor	90Kg	85Kg	76Kg	68Kg	60Kg
R300	Single Motor	40Kg	30Kg	25Kg	15Kg	10Kg
	Dual Motor	68Kg	51Kg	42Kg	35Kg	25Kg
R300	Single Motor	30Kg	25Kg	20Kg	15Kg	10Kg
	Dual Motor	51Kg	42Kg	35Kg	25Kg	17Kg
R3000	Single Motor	40Kg	30Kg	25Kg	20Kg	15Kg
	Dual Motor	68Kg	51Kg	42Kg	35Kg	25Kg

Curtain fabric weight=fabric weight (kg/m²) ×area (m²) ×fullness (%)

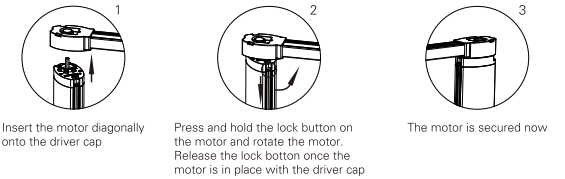
This motor load is tested when there is no obstacle to operate the drapery, and the pulling force is less than 1kgf. The motor load will change depending on the site condition (eg. friction between the drapery and narrow pelmet will reduce the motor load)

Curtain Track Installing

The Requirements Of The Curtain Recessed Box



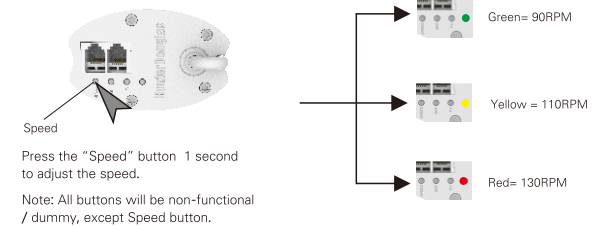
Install The Motor



Remove The Motor



Functional Illustration



Control

*The Wiring of high voltage controlling of track with dual motors

Wire the corresponding wire together in high voltage controlling, and connect them with the controlling client. The same moving direction must be wired together, through this synchronization can be achieved. Both motors speed should be same in Dual Motor application.

