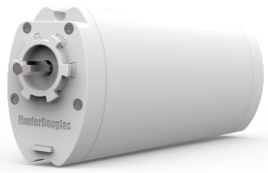


HD60G

Silent Curtain Motor

Manual V1.0
 HD60G-QRF
 HD60G-QRF-M
 HD60G-QRF-S



Smart & Silent

Product Features

- Ultra Quiet**
Noise level as low as 27 dB (A)
- Auto Calibration**
Built in Hall sensor for precise limit control and calibration
- One Touch Operation**
Activate the operation to close or open by gently pulling the curtain
- Stop By Obstacle**
The motor will stop operation automatically when obstacles are detected to prevent further damage to the system
- R300 Curved Track**
Available in L shape, U shape, C shape track with minimum radius of 300mm
- Multiple Control Option**
Can be controlled by wireless remote control, RS485 or dry contact connection
- Curtain Stack Protection**
Recognize the stacking distance in order not to overstack the curtain
- Speed Adjustment**
3 speeds available, 90rpm, 110rpm, 130rpm
- Ripple Fold**
Available in ripple fold for fuller and consistent drapery folds
- Soft Start/Stop**
Auto detect for draperies to slow down and stop smoothly when it is close to the end limit
- Manual Operation**
In case of power failure, manual control is possible to open/close the drapery
- Memory Saving**
Built in memory saving module to save the limit automatically during power failure. No resetting required when the power resumes (in case where the curtain position has changed after power failure, the motor will re-calibrate again for the limit)

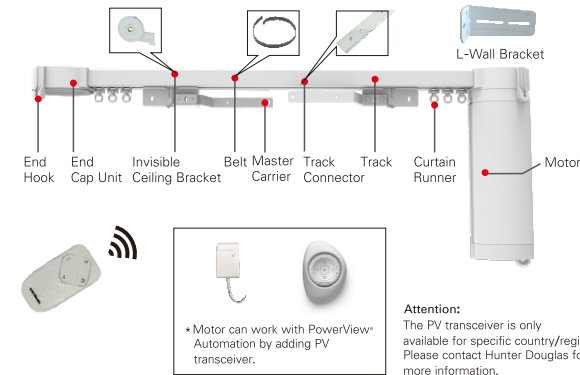
Product Highlights

- Compatible with PowerView® Automation by adding a PowerView® transceiver
- Invisible installation brackets
- Power cable is concealed at the side of motor, leaving a neat look after installation
- Tracks are coated by electrophoretic coating process, providing a even and smooth finishing surface to minimize friction and noise during operation
- Strong signal strength with hidden antenna
- Secure installation of the motor by plug-in and rotate method

Specification

AC Version	Rated Voltage	Rated Frequency	Rated Torque	Speed	Max Power	Protection Level	Insulation Class	Duty Rating
AC100-240V	50/60HZ	50/60HZ	1.2N.m	30-130rpm	50W	IP41	E	S2-10min

System Accessories Overview



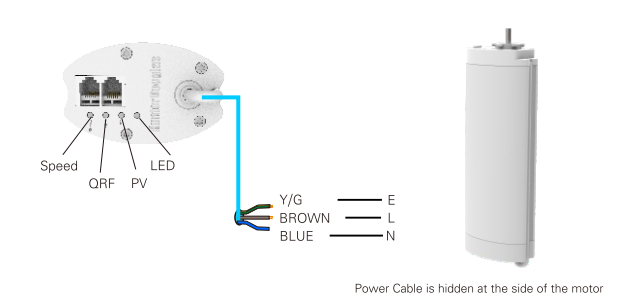
Motor Load Chart (for reference only)

Track Type	Curtain Weight	Track length				
		4m	6m	8m	10m	12m
Single Motor	60Kg	50Kg	45Kg	40Kg	35Kg	
	90Kg	85Kg	76Kg	68Kg	60Kg	
Single Motor	40Kg	30Kg	25Kg	15Kg	10Kg	
	68Kg	51Kg	42Kg	35Kg	25Kg	
Single Motor	30Kg	25Kg	20Kg	15Kg	10Kg	
	51Kg	42Kg	35Kg	25Kg	17Kg	
Single Motor	40Kg	30Kg	25Kg	20Kg	15Kg	
	68Kg	51Kg	42Kg	35Kg	25Kg	

Curtain fabric weight=fabric weight (kg/m²) ×area (m²) ×fullness (%)

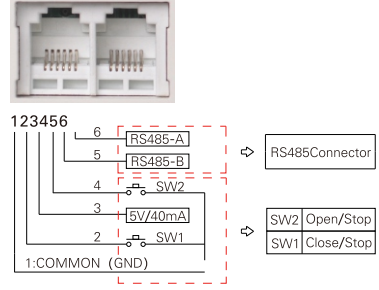
This motor load is tested when there is no obstacle to operate the drapery, and the pulling force is less than 1kgf. The motor load will change depending on the site condition (eg. friction between the drapery and narrow pelmet will reduce the motor load)

Wiring Diagram



RJ12 CONNECTION PORT

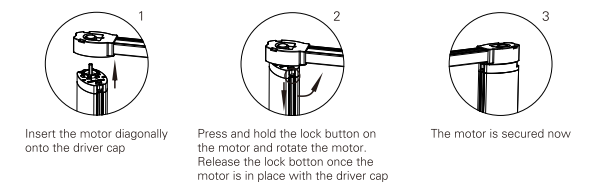
*no primary and secondary port for this connection



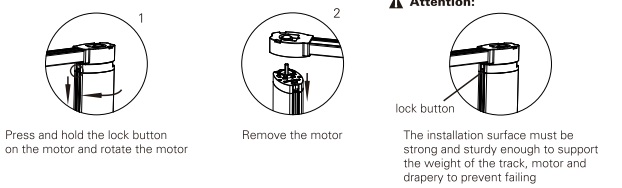
The same port can be used for dry contact connection port

Motor Assembly

Install the motor

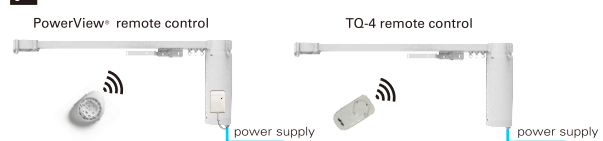


Remove the motor



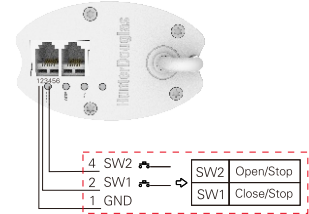
Control Option

Radio Frequency



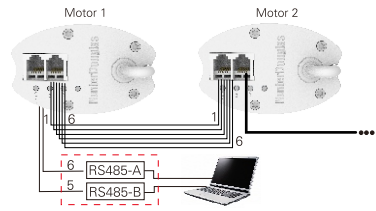
Dry Contact

*No primary and secondary port for this connection. RS485 protocol is required for this control option.



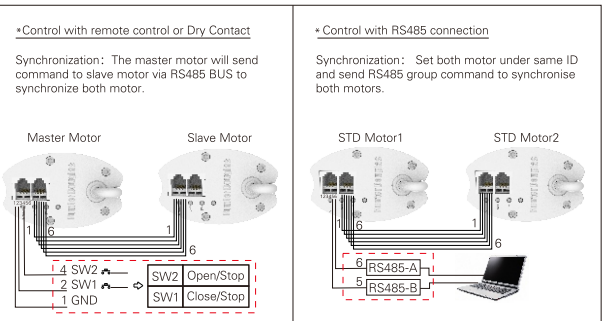
RS485 and Group Control

*PowerView® Automation can't be used together with RS485 control. No primary and secondary port for this connection.



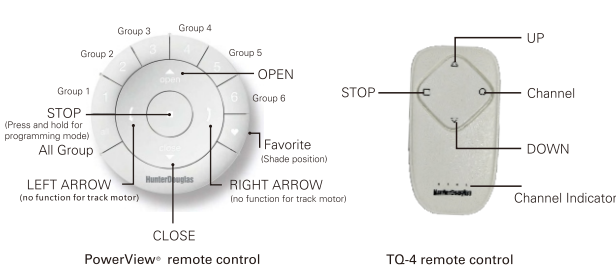
Single Track with Dual Motor Connection.

*No primary and secondary part for this connection



Note: Both motor speed should be same for Dual motor application.

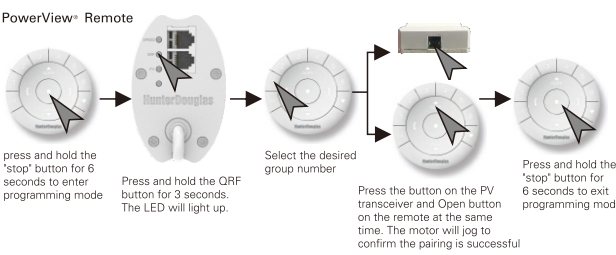
Type of Remote Control



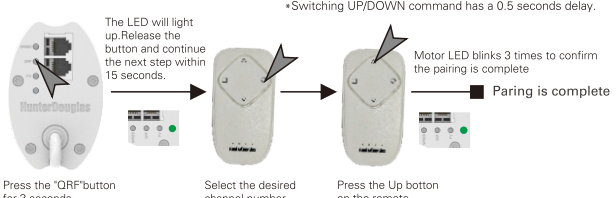
Programming Instruction

1. Pairing with Motor

*If you want to remove the pairing, repeat step 1-5, press 'close' button in step 4 to remove the pairing

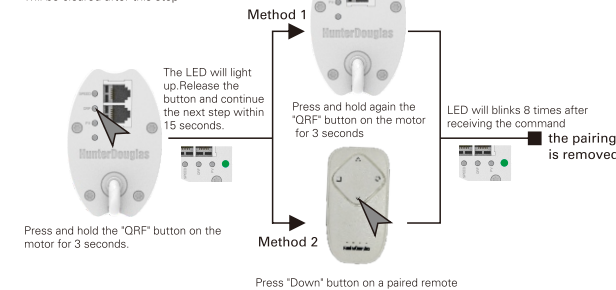


TQ-4 Remote

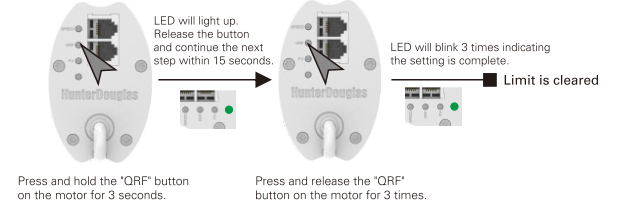


2. Remove Pairing

*All remote control and RS485 ID will be cleared after this step



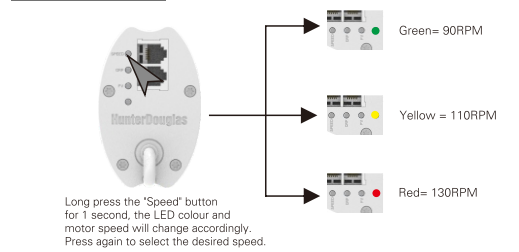
3. Clear Limit



4. Setting Limit

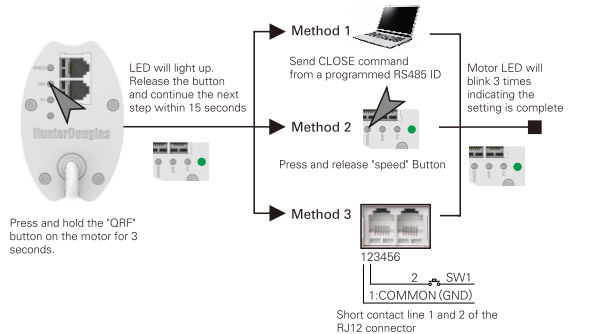
Operate the curtain with a remote for 3 complete runs, the end limit will be set automatically

5. Speed Adjustment



6. Reverse Motor Direction

*If the curtain travels in the opposite direction after command is given, please reverse the motor direction. *After this setting, the moving direction in RS485 command will be corrected together



Troubleshooting Guide

Issue	Cause	Solution
Curtain not fully closed	Limit may has been adjusted especially during manual operation	Clear the limit and reset again. (refer to Point 4 in the Programming Instruction)
Not able to operate by manual hand pulling	1. Power failure during operation 2. wrong manual operation causing the master carrier to get stuck	1. slightly pull back the curtain and try again. 2. Pull back the curtain for 10cm and try again
Remote Control is not working	1. remote Setting might be cleared accidentally. 2. Strong signal interference	1. reprogram the remote again 2. eliminate the interference
Curtain operates automatically without any command	Pairing with wrong remote	Remove the pairing (follow point 2) and reprogram the remote again.